



## QUICK TAKES • Single People in the United States

### POPULATION

- In March 2005, 53.1% of single people ages 15 and over were women. <sup>1</sup>

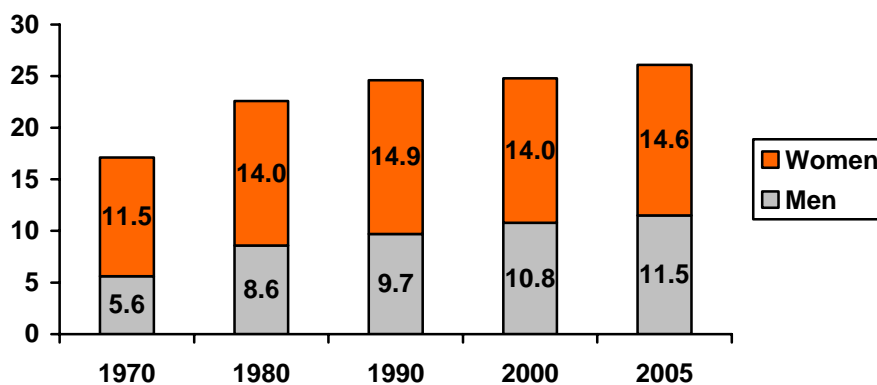
	Female	Male
Never married	30,664,000	36,367,000
Divorced	13,003,000	9,258,000
Widowed	11,112,000	2,725,000
<b>Total</b>	<b>54,779,000</b>	<b>48,350,000</b>

- 74.7% of women and 86.2% of men ages 20-24 have never been married, 41.5% of women and 55.2% of men ages 25-29 have never been married, and 23.8% of women and 32.0% of men ages 30-34 have never been married. <sup>1</sup>
- 42.9% of women 65 and older are widowed, compared to 13.7% of men in the same age group. <sup>1</sup>
- For women and men ages 50-54, 18.7% of women and 13.8% of men are divorced. <sup>1</sup>

### LIVING ARRANGEMENTS

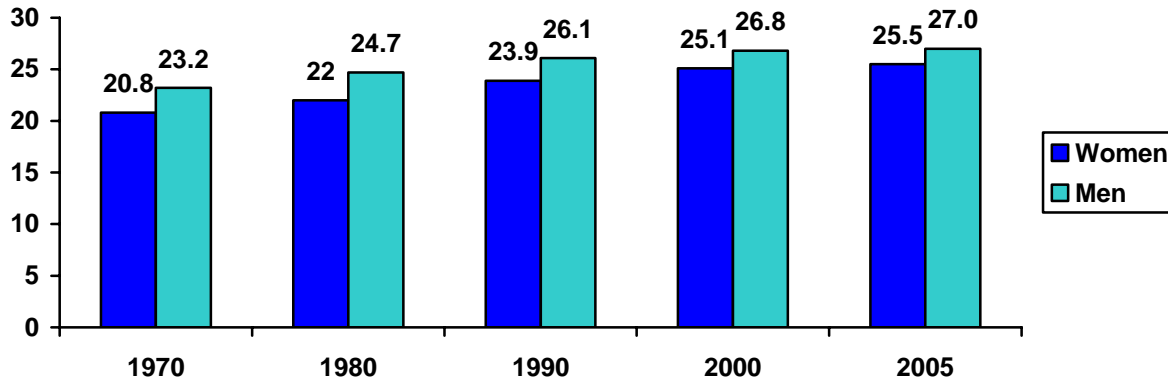
- In March 2005, there were 17,330,000 women 18 and older living alone<sup>2</sup>, up from 15,312,000 in March 1998. <sup>3</sup>
- Women living alone represented 67.0% of one-person households in 1970 and declined to 57.5% of one-person households by 2005. Although there are still more households with women living alone, men living alone has had a higher growth rate since 1970. <sup>2,3</sup>

Percent Men or Women Living Alone, 1970 to 2005 <sup>2, 3, 4</sup>



## MARRIAGE AND CHILDREN

Median Age of First Marriage for Women and Men 15 Years and Over, 1970-2005<sup>3, 5</sup>



- In March 2005, there were 10,366,000 single mothers with children under 18, and they had a labor force participation rate of 76.7% (7,949,000 single mothers in the labor force). This is compared to 2,469,000 single fathers with children under 18, and they had a labor force participation rate of 89.0% (2,197,000 single fathers in the labor force).<sup>6</sup>

## LABOR FORCE

- The labor force participation rate for single women in 2005 was 57.8%.<sup>7</sup>
  - 19,183,000 never married women were in the labor force, with a participation rate of 66.0%
  - 9,157,000 divorced women were in the labor force, with a participation rate of 70.5%
  - 2,100,000 widowed were in the labor force, with a participation rate of 18.9%

## EARNINGS AND INCOME

- Single women ages 35-44 had the highest average annual expenditures of all age groups at \$31,524.<sup>8</sup>

---

## Sources

1. U.S. Census, Families and Living Arrangements, "Table A1: Marital Status of People 15 Years and Over, by Age, Sex, Personal Earnings, Race, and Hispanic Origin: 2005."
2. U.S. Census, Families and Living Arrangements, "Table A2: Family Status and Household Relationship of People 15 Years and Over, by Marital Status, Age, Sex, Race, and Hispanic Origin: 2005."
3. Jason Fields, Families and Living Arrangements: 2003, Current Population Reports, U.S. Census. <http://www.census.gov/prod/2004pubs/p20-553.pdf>
4. U.S. Census, Families and Living Arrangements, "Table A2: Family Status and Household Relationship of People 15 Years and Over, by Marital Status, Age, Sex, Race, and Hispanic Origin: March 2000."
5. U.S. Census, 2005 American Community Survey, "B12007: Median Age At First Marriage - Universe: Population 15 To 54 Years."
6. U.S. Census, Families and Living Arrangements, "Table FG5. One-Parent Family Groups with Own Children Under 18, by Labor Force Status, and Race and Hispanic Origin/1 of the Reference Person: 2005."
7. Bureau of Labor Statistics, "Table 4: Employment status by marital status and sex, 2005 annual averages," *Women in the Labor Force: A Databook* (2006).
8. Bureau of Labor Statistics, Consumer Expenditure Survey, "Table 42. Consumer units of single females by age of reference person: Average annual expenditures and characteristics, Consumer Expenditure Survey, 2004-2005."