



QUICK TAKES • Women in the Sciences

LABOR FORCE¹

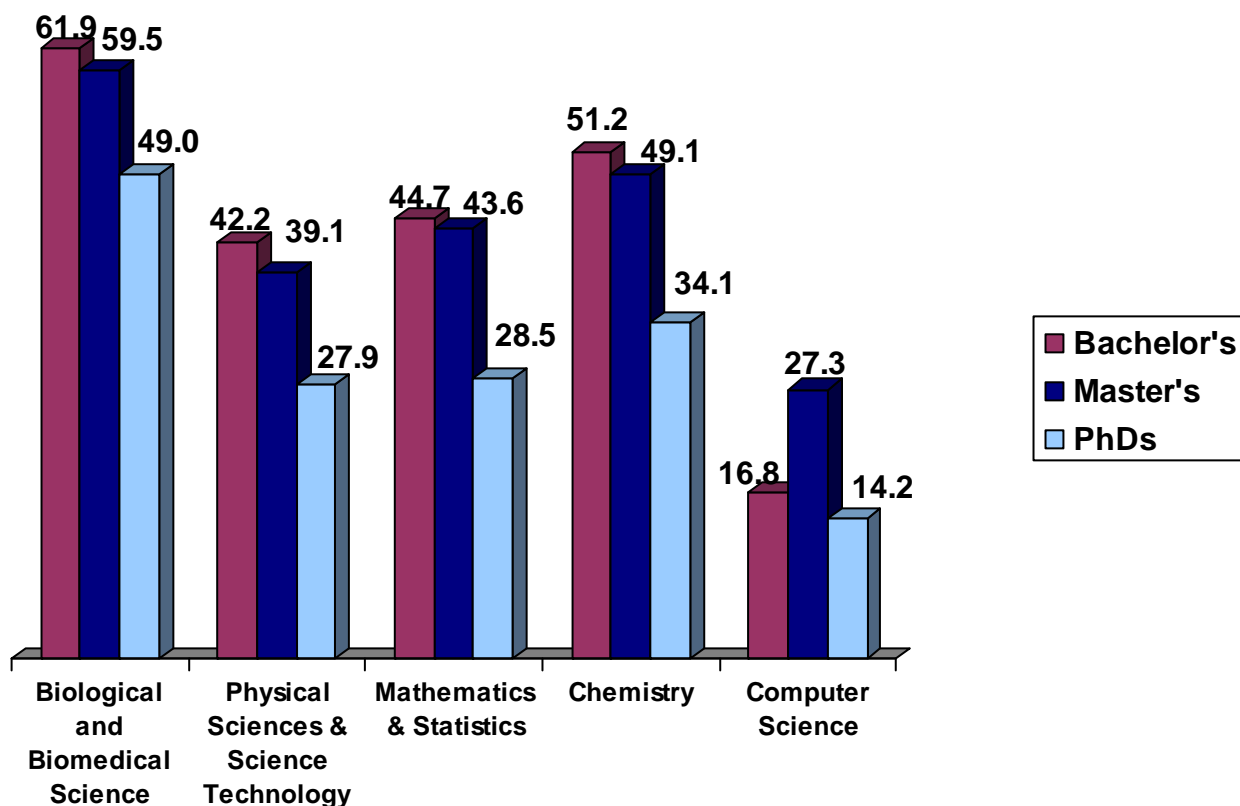
Occupation	Percent of Women
Biological Scientists	42.6%
Medical Scientists	49.1%
Chemists and Materials Scientists	40.8%
Computer and Mathematical Occupations	25.6%

WOMEN IN MANAGEMENT IN SCIENCE

- Women are 27.5% of all management/administration professionals in science.²
- Of scientists and engineers employed in business and industry, men, on average, have 12 subordinates. Women have 9 subordinates.³
- According to a survey of 42 chemical companies,⁴
 - only 9.2% of all 404 executive officer positions were filled by women; this has risen from 8.7% in 2006.
 - women are only 12.0% of the 416 board directors. While it is an improvement since a 2006 survey where only 11.1% of its directors were women, it has not surpassed the 12.8% measured in a 2003 survey of board directors at chemical companies.

EDUCATION⁵

Percent of Bachelor's, Master's, and PhD Degrees Received by Women in Science Fields



WOMEN IN ACADEMIC SCIENCES

- Women have low representation as department heads at the top 50 science programs. Women are department heads in only 4% of the top 50 chemistry programs, and there are no women department heads in top 50 chemical engineering or top 50 physics programs.⁶
- Women with eight or nine years of postdoctoral experiences who are employed full time in academia are about 6.9% less likely than men to be tenured, and women with 14 or 15 years of experience are 8.5% less likely than men to be tenured.⁷

Percent of University Faculty with Scientific Doctorates That Are Women ⁸	
Faculty Title	Percent
Professor	19.5%
Associate Professor	35.1%
Assistant Professor	39.9%

- In most fields in academia, men dominate the positions filled by doctoral scientists and engineers.⁹

Women in Academia (by years worked) ⁹		
Field of Doctorate	Percent of Women in Positions in Academia (Working less than 10 years)	Percent of Women in Positions in Academia (Working 10 or more years)
Mathematical sciences	24.7%	10.6%
Biological and agricultural sciences	39.3%	24.7%
Health sciences	68.1%	55.3%
Physical and related sciences	22.8%	10.7%
Social sciences	44.0%	26.2%
Psychology	65.8%	38.3%
Engineering	16.6%	4.4%

WOMEN OF COLOR IN SCIENCE

- Women of color are 7.0% of all employed scientists and engineers in the United States.¹⁰
- Of employed scientists with science and engineering degrees, women of color received 6.1% of all bachelor's, 8.5% of all master's degrees, and 6.9% of all doctorates.¹¹

Percent of Science and Engineering University Faculty that Are Women of Color¹²	
Faculty Title	Percent
Professor	2.3%
Associate Professor	7.7%
Assistant Professor	9.3%

THE WAGE GAP IN SCIENCE

- Women earn 77.0% as much as men in 2005, based on the median income for full-time, year-round women workers.¹³

Salaries of Women in Science (as compared to men's salaries) ¹⁴			
Occupation	Women's Salary as a Percent of Men's Salary	Women's Median Salary	Men's Median Salary
Mathematical sciences	84.8%	\$64,000	\$75,500
Biological and agricultural sciences	80.0%	\$60,000	\$75,000
Health sciences	78.1%	\$62,500	\$80,000
Physical and related sciences	84.7%	\$72,000	\$85,000
Social sciences	83.3%	\$60,000	\$72,000
Psychology	83.3%	\$60,000	\$72,000

WOMEN NOBEL PRIZES WINNERS IN SCIENCE¹⁵

- Since the Nobel Prize was established in 1901, only two women, Marie Curie (1903) and Maria Mayer (1963), have won the Nobel Prize for Physics.
- Three women, Marie Curie (1911), Irene Joilet-Curie (1935), and Dorothy Crowfoot Hodkin (1964) have won the Nobel Prize in Chemistry since 1901.

Sources

1. Current Population Survey, Bureau of Labor Statistics, "Table 11: Employed persons by detailed occupation, sex, race, and Hispanic or Latino ethnicity 2007," Annual Averages (2008).
<http://www.bls.gov/cps/cpsaat11.pdf>
2. National Science Foundation, "TABLE H-33. Primary or secondary work activity of scientists and engineers employed in business or industry, by age, sex, race/ethnicity, and disability status: 2003" (2006).
<http://nsf.gov/statistics/wmpd/pdf/tabh-33.pdf>
3. National Science Foundation, "Figure H-7. Median number of subordinates of scientists and engineers employed in business or industry, by sex, race/ethnicity, and disability status: 2003," *Women, Minorities, and Persons with Disabilities in Science and Engineering* (2006). <http://www.nsf.gov/statistics/wmpd/figh-7.htm>
4. Alexander H. Tullo, "Women in Industry: In the Boardroom and Executive Suite, Participation is Still Miniscule," *Chemical and Engineering News*, vol. 85, no. 31 (July 30, 2007): p. 38-39.
<http://pubs.acs.org/email/cen/html/102507172609.html>
5. National Center for Education Statistics, "Bachelor's, master's, and doctor's degrees conferred by degree-granting institutions, by sex of student and field of study: 2004-05" (2006).
http://nces.ed.gov/programs/digest/d06/tables/dt06_258.asp

6. AWIS, "Utilization of Chemistry, Chemical Engineering, Physics, and Biological Sciences PhD Recipients in Faculties of Those "Top 50" Departments." <http://www.serve.com/awis/statistics/utilizationPHYS.pdf>
7. National Science Foundation, *Gender Differences in the Academic Careers of Scientists and Engineers* (2004). <http://www.nsf.gov/statistics/nsf04323/pdf/nsf04323.pdf>
8. National Science Foundation, "TABLE H-25. S&E doctorate holders employed in universities and 4-year colleges, by broad occupation, sex, race/ethnicity, and faculty rank: 2003," *Women, Minorities, and Persons with Disabilities in Science and Engineering* (2006). <http://www.nsf.gov/statistics/wmpd/pdf/tabh-25.pdf>
9. National Science Foundation/Division of Science Resources Statistics, "Table 19. Employed doctoral scientists and engineers in universities and 4-year colleges, by broad field of doctorate, sex, faculty rank, and years since doctorate: 2001," *2001 Survey of Doctorate Recipients* (2001). http://www.serve.com/awis/statistics/Faculty_rank_yrs_since_doctorate_sex_2001.pdf
10. National Science Foundation, "TABLE H-37. Demographic characteristics of employed S&E doctorate holders, by race/ethnicity and sex: 2003," *Women, Minorities, and Persons with Disabilities in Science and Engineering* (2006). <http://www.nsf.gov/statistics/wmpd/pdf/tabh-37.pdf>
11. National Science Foundation, "TABLE H-7. Employed scientists and engineers, by occupation, highest degree level, race/ethnicity and sex: 2003," *Women, Minorities, and Persons with Disabilities in Science and Engineering* (2006). <http://www.nsf.gov/statistics/wmpd/pdf/tabh-7.pdf>
12. National Science Foundation, "TABLE H-25. S&E doctorate holders employed in universities and 4-year colleges, by broad occupation, sex, race/ethnicity, and faculty rank: 2003," *Women, Minorities, and Persons with Disabilities in Science and Engineering* (2006). <http://www.nsf.gov/statistics/wmpd/pdf/tabh-25.pdf>
13. U.S. Census, *Income, Poverty, and Health Insurance Coverage in the United States: 2005*. "Table 1. Income and Earnings Summary Measures by Selected Characteristics: 2004 and 2005."
14. National Science Foundation/Division of Science Resources Statistics, "Table 53. Median annual salaries of full-time employed doctoral scientists and engineers, by sector of employment, broad field of doctorate, and sex: 2001," *2001 Survey of Doctorate Recipients*. http://www.serve.com/awis/statistics/Median_salary_by_employment_sector_sex_2001.pdf
15. Nobel Prize, "Women Nobel Laureates" (2007). http://nobelprize.org/nobel_prizes/lists/women.html

UPDATED 02-28-08